

# March 2015 Residential Market Report

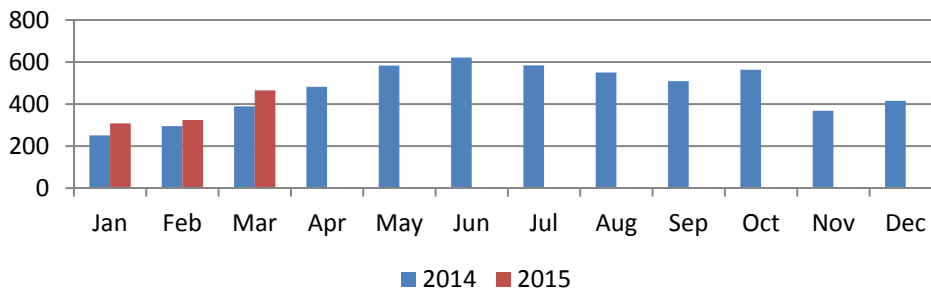
Larimer County



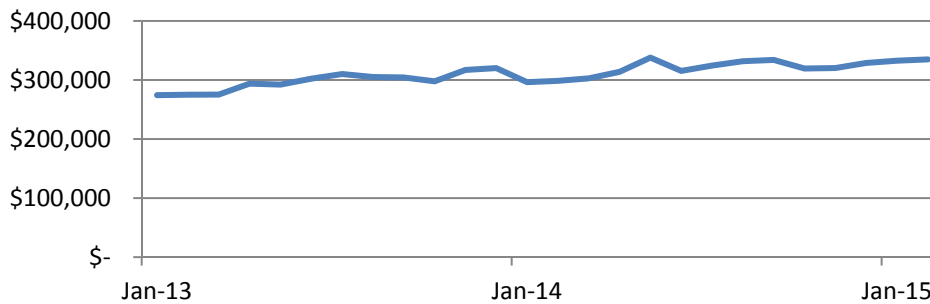
## Detached - Single Family

	2014	2015	Prior Month	% Change MOM
Units Sold - Month	389	465	324	43.5%
Units Sold - YTD	935	1097	632	73.6%
Average Days on Market	94	94	102	-7.9%
Median Sales Price	\$ 256,000	\$ 314,500	\$ 307,924	2.1%
Average Sales Price	\$ 302,743	\$ 343,341	\$ 334,830	2.5%

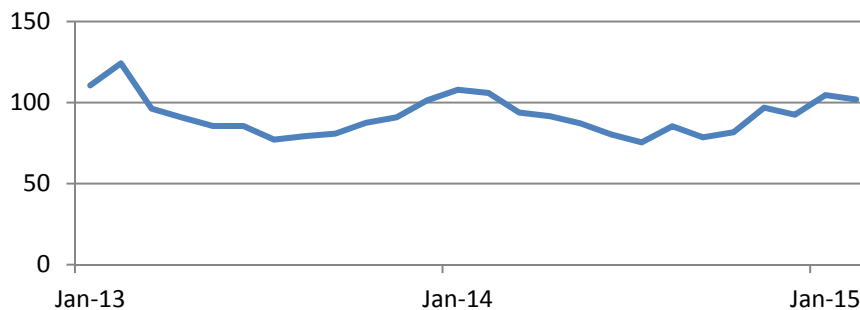
## Units Sold



## Average Sales Price



## Days on Market



# March 2015 Residential Market Report

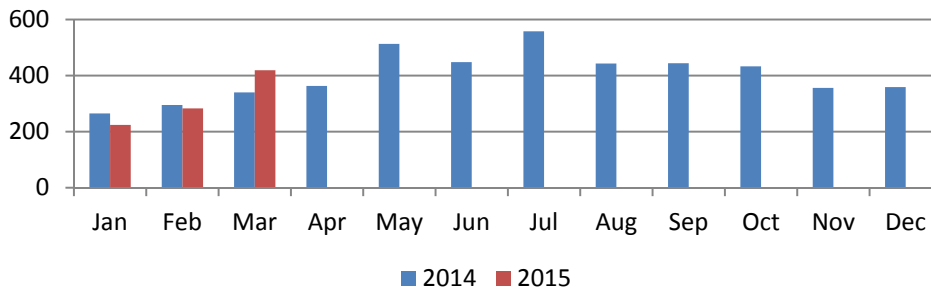
Weld County



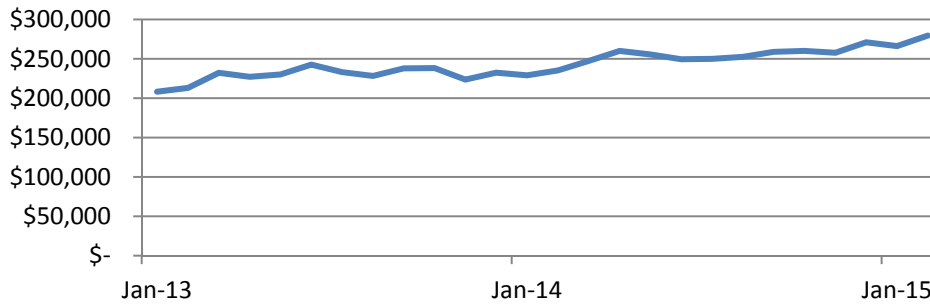
## Detached - Single Family

	2014	2015	Prior Month	% Change MOM
Units Sold - Month	340	419	283	48.1%
Units Sold - YTD	900	926	507	82.6%
Average Days on Market	88	70	85	-18.2%
Median Sales Price	\$ 230,000	\$ 250,000	\$ 254,000	-1.6%
Average Sales Price	\$ 247,330	\$ 276,537	\$ 279,503	-1.1%

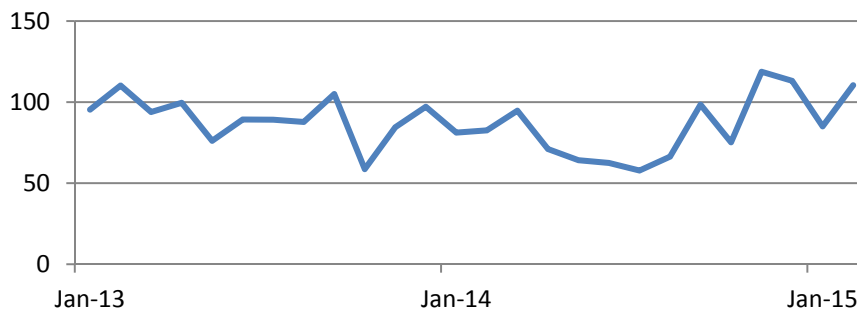
## Units Sold



## Average Sales Price



## Days on Market



# March 2015 Residential Market Report

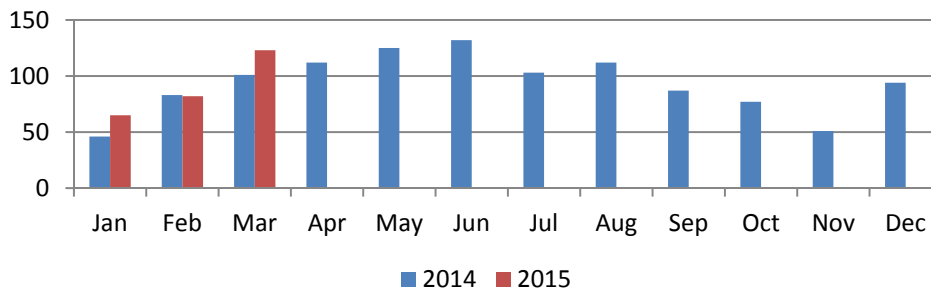
Larimer County



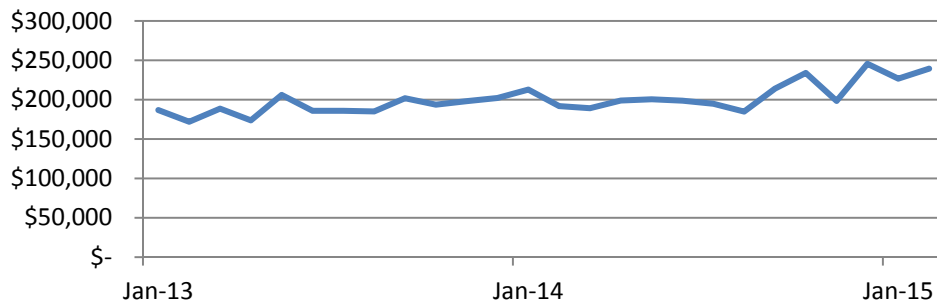
## Attached - Condo / Townhome

	2014	2015	Prior Month	% Change MOM
Units Sold - Month	101	123	82	50.0%
Units Sold - YTD	230	270	147	83.7%
Average Days on Market	95	90	110	-18.6%
Median Sales Price	\$ 174,900	\$ 225,000	\$ 233,000	-3.4%
Average Sales Price	\$ 189,173	\$ 228,610	\$ 239,355	-4.5%

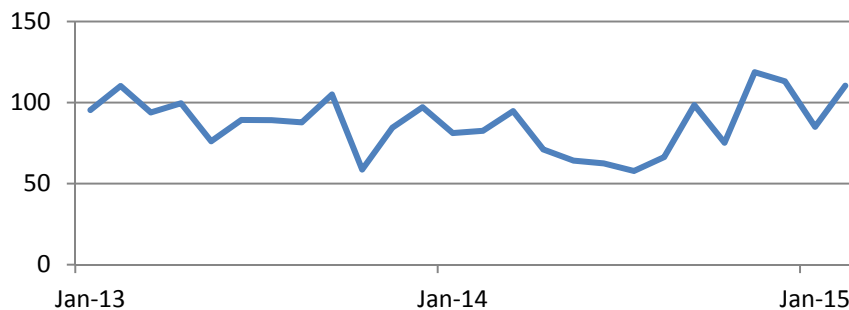
## Units Sold



## Average Sales Price



## Days on Market



# March 2015 Residential Market Report

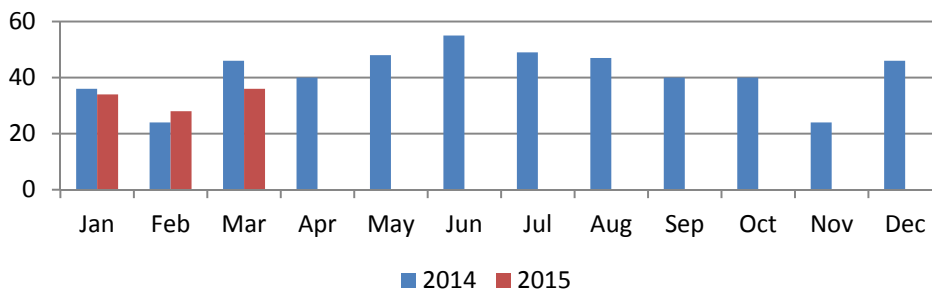
Weld County



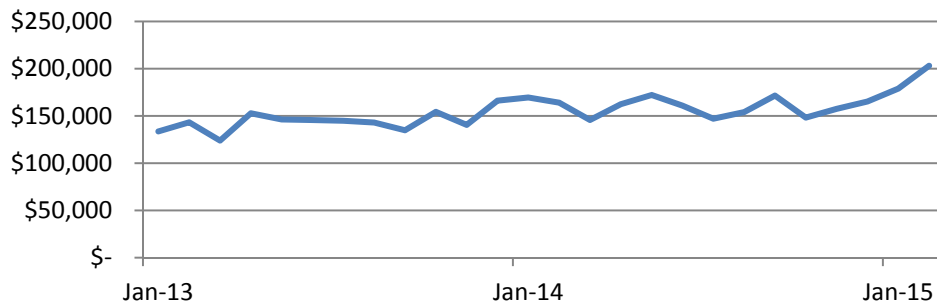
## Attached - Condo / Townhome

	2014	2015	Prior Month	% Change MOM
Units Sold - Month	46	36	28	28.6%
Units Sold - YTD	106	98	62	58.1%
Average Days on Market	65	46	86	-45.8%
Median Sales Price	\$ 133,900	\$ 155,950	\$ 185,950	-16.1%
Average Sales Price	\$ 145,696	\$ 162,337	\$ 203,107	-20.1%

### Units Sold



### Average Sales Price



### Days on Market

